


PROCEEDING OPEN ACCESS

INTEGRAL Observations of Magnetars

Dominik Patryk Pacholski^{1,2}  | Lorenzo Ducci^{3,4} | Martin Topinka⁵ | Sandro Mereghetti¹

¹Istituto di Astrofisica Spaziale e Fisica Cosmica di Milano, INAF, Milano, Italy | ²Dipartimento di Fisica G. Occhialini, Università degli Studi di Milano Bicocca, Milano, Italy | ³Institut für Astronomie und Astrophysik, Kepler Center for Astro and Particle Physics, University of Tuebingen, Tübingen, Germany | ⁴ISDC Data Center for Astrophysics, University of Geneva, Geneva, Switzerland | ⁵INAF, Osservatorio Astronomico di Cagliari, Selargius, Italy

Correspondence: Dominik Patryk Pacholski (dominik.pacholski@inaf.it)**Received:** 30 October 2024 | **Accepted:** 31 October 2024**Funding:** This work was supported by Istituto Nazionale di Astrofisica, Magnetars Large Program Grant.**Keywords:** gamma rays: bursts | stars: neutron | X-rays: bursts

ABSTRACT

The INTEGRAL satellite has collected a large amount of data on magnetars in our Galaxy, spanning more than 20 years starting from 2003. The large data set obtained with the IBIS/ISGRI instrument at energies above 20 keV allows us to study both the properties and long-term evolution of their persistent hard X-ray emission and the population characteristics of the short bursts emitted during active periods. We are carrying out a comprehensive analysis of the observed magnetars, exploiting the most recent calibrations and analysis software. Here we report on the long term evolution of the hard X-ray flux of the magnetars detected with ISGRI and the results of a sensitive search for short bursts in SGR J1935+2154.

1 | Introduction

Magnetars are a small class of young neutron stars, with only around 30 known sources (Olausen and Kaspi 2014). They are powered by their strong magnetic field, which can reach up to 10^{15} G (e.g., Kaspi and Beloborodov 2017; Mereghetti, Pons, and Melatos 2015). They exhibit a variety of emissions, ranging from short bursts that last only a few tens of milliseconds to long outbursts that can persist for weeks or even months. During these outbursts, the persistent emission can increase by 10 to 10^3 times above its normal level (e.g., Coti Zelati et al. 2018). The outbursts are often correlated with an increased number of bursts, and are followed by long periods of quiescence, during which the emission returns to a quiescent level of $10^{30} - 10^{33}$ erg s⁻¹. In the hard X-ray range (>10 keV), a few magnetars display a hard power-law tail extending up to ~ 200 keV, with emission energetically comparable to the one in the soft energy range (den Hartog et al. 2006;

Ducci et al. 2015; Götz et al. 2007; Kuiper et al. 2006; Molkov et al. 2005).

INTEGRAL is a satellite of the European Space Agency operating since the end of 2002. It has extensively observed the Galactic plane, thus providing long-term coverage of the whole population of Galactic magnetars. Here we concentrate on data obtained with IBIS (Imager on Board of the INTEGRAL Satellite, Ubertini et al. (2003)), which is a coded-mask instrument comprising two detectors, ISGRI and PICsIT. ISGRI operates in the $\sim 20 - 1000$ keV range, providing photon-by-photon data that allow high-resolution timing and imaging with 12 arcmin angular resolution in a field of view of 29×29 deg² (Lebrun et al. 2003).

We used data of the ISGRI detector to study both the persistent hard X-ray emission and the short bursts of magnetars, exploiting

This is an open access article under the terms of the [Creative Commons Attribution](https://creativecommons.org/licenses/by/4.0/) License, which permits use, distribution and reproduction in any medium, provided the original work is properly cited.

© 2024 The Author(s). *Astronomische Nachrichten* published by Wiley-VCH GmbH.

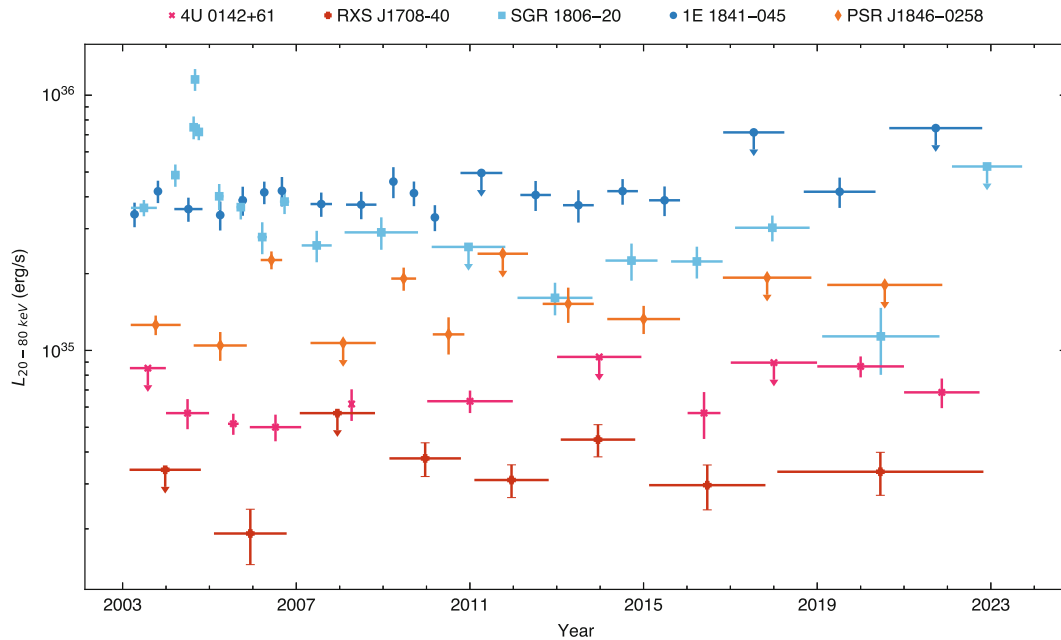


FIGURE 1 | Long term evolution of the luminosity in the 20–80 keV energy range for five magnetars. The adopted distances are 3.6 kpc for 4U 0142+61, 3.8 kpc for RXS J1708-40, 8.7 kpc for SGR 1806-20, 8.5 kpc for 1E 1841-045, and 6.0 kpc for PSR J1846-0258.

the most recent software, Off-line Scientific Analysis (OSA) version 11.2 (Goldwurm et al. 2003), and calibrations.

2 | Data Analysis and Results

2.1 | Long Term Light Curves

In order to optimize the imaging performances and reduce systematic background effects, INTEGRAL observes using a dithering strategy. As a result, the data are split into short pointings called Science Windows (ScWs) with typical duration of ~ 30 min each.

To study the long term evolution of the hard X-ray emission, we selected all the ScWs pointed within 10° from the source of interest. This guarantees a good sensitivity and a well-known response of the instrument. We removed all the ScWs affected by high background or other instrumental problems.

The lower energy threshold of the ISGRI instrument evolved during the mission due to the aging of the detector, from ~ 18 keV in the early years to the current value of ~ 30 keV. In order account for this effect without losing too much sensitivity, we created images in the broad energy range [$E_{\min} - 80$ keV], with E_{\min} calculated to ensure stable response of the instrument and taking progressively increasing values from 18 to 30 keV as the mission evolved.¹

In general, the persistent emission of our targets is too faint to be detected in single ScWs. Therefore, we stacked ScWs for time intervals sufficiently long to reach a detection significance of at least 7σ for each magnetar. This value was chosen after several tests which showed that lower confidence levels may lead to an overestimate of the flux.

We then used the `mosaic_spec` tool in OSA to extract from the created mosaics the background-subtracted count rates of the source. A 5% systematic uncertainty was added to the count rate statistical errors. These count rates (extracted in different energy intervals) were then converted to fluxes in the 20–80 keV range, using the conversion factors derived from the proper (time-dependent) response files created *ad hoc* for each mosaic.

Since the magnetar hard X-ray emission in the analyzed energy range is usually well described by a power law with photon index Γ between 1 and 2, we assumed $\Gamma = 1.7$ and, to account for possible different slopes, we included an additional 5% flux uncertainty, that would result for Γ between 1 and 2.5.

We could create long term lightcurves (shown in Figure 1) for the five sources listed in Table 1. We also include the allegedly rotation-powered PSR J1846-0258 which exhibited magnetar-like behavior in 2006 (Gavriil et al. 2008; Kuiper and Hermesen 2009) and in 2020 (Kuiper et al. 2020). Three more magnetars were detected only for short time periods and are not shown in the figure. They are SGR 0501+4516 and 1E 1547.0-5408, detected during an outburst occurring in 2008 and 2009, respectively, and SGR 1900+14, which was visible in 2004 and had only a few low-confidence detections in the following years. The variability factor, defined as $V_f = F_{\max}/F_{\min}$, and the error weighted average flux of the sources are listed in Table 1.

2.2 | Bursting Activity From SGR J1935+2154

SGR J1935+2154 has been one of the most active magnetars in recent years. Since its discovery in 2015, it went through multiple outbursts (Borghese et al. 2022; Ibrahim et al. 2024; Lin et al. 2020a, 2020b; Younes et al. 2020, 2017) connected with bursting activity. During one of the most active periods, in April

TABLE 1 | List of detected magnetars with their average X-ray fluxes (F_{mean}) and variability factors (V_f).

| Source | F_{mean}^a | V_f |
|----------------|---------------------|----------------|
| 4U 0142+61 | 3.83 ± 0.16 | 1.9 ± 0.4 |
| RXS J1708-40 | 1.80 ± 0.13 | 3.0 ± 0.8 |
| SGR 1806-20 | 3.31 ± 0.10 | 10.2 ± 3.1 |
| 1E 1841-045 | 4.42 ± 0.12 | 2.2 ± 0.4 |
| PSR J1846-0258 | 3.26 ± 0.14 | 2.3 ± 0.4 |

^aError weighted average flux in the 20 – 80 keV energy range in units of $10^{-11} \text{ erg cm}^{-2} \text{ s}^{-1}$ excluding upper limits.

2020, it emitted a so-called “burst forest” consisting of more than 200 burst within 20 min (Cai, Xue, et al. 2022; Kaneko et al. 2021; Younes et al. 2020). A few hours later it also provided evidence for a connection between magnetars with Fast Radio Burst (FRB), because it emitted a strong FRB-like burst of radio emission simultaneously with a hard spectrum X-ray burst (Bochenek et al. 2020; CHIME/FRB Collaboration et al. 2020; Li et al. 2021; Mereghetti et al. 2020; Ridnaia et al. 2021; Tavani et al. 2021). We searched for all public ScWs in the INTEGRAL archive in which source was within 14.5° from the pointing direction. We eliminated the ScWs affected by strong and/or highly variable background, finally resulting in 12,409 ScWs for a total observing time of about 31 Ms.

For each ScW, we selected only events registered by the detector’s pixels that were illuminated by the source for at least 50% of their surface. We extracted 15–300 keV light curves in seven logarithmically-spaced time bins of duration between 10 ms and 1.28 s. These were then examined looking for bins in which counts significantly exceeded a threshold corresponding to a 3σ level, accounting for the total number of bins. All the triggers found in the light curves with this procedure were then examined exploiting the imaging capabilities of the detector to confirm their nature and association with the magnetar.

This finally led to a sample of 182 bursts, most of which (149) were emitted during the outburst in October 2022. In particular, we observed 137 bursts between October 12 at 12:47 UT and October 13 at 00:56 UT. Two minutes after the last burst, there was a gap in observation until October 14 at 6:43 UT. The next burst was observed at 20:48:37 UT, after more than 38 ks of observation time. In the following analysis, we focused on the 149 bursts of the October 2022 outburst.

To derive the burst properties, we corrected the number of detected counts to take into account the off-axis position and the dead-time of the detector, which is equal to $114 \mu\text{s}$ for each illuminated module of the detector (Götz et al. 2006). In Figure 2 we show the resulting number of counts for each burst as a function of time.

We estimated the duration T_{BB} of the bursts using Bayesian Blocks (Scargle 1998). This technique segments a non-binned event list into time intervals, each of which has no statistically significant variability within itself. This allows the identification of significant change points that mark the start of new intervals, enabling a more precise determination of the burst duration.

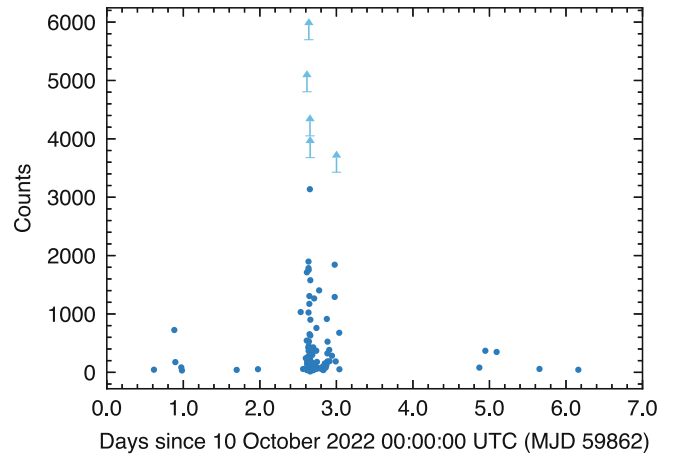


FIGURE 2 | Corrected number of counts for each burst detected by ISGRI in the October 2022 outburst of SGR J1935 + 2154. Saturated bursts are indicated by light-blue arrows representing the lower limit.

We plotted in Figure 3 (left panel) the distribution of the logarithms of the durations. It is well fit by a Gaussian with mean $114 \pm 9 \text{ ms}$. The plot of burst duration over time (right panel of Figure 3) shows that the longest bursts occurred mostly during the peak of bursting activity.

We selected bursts with at least 300 counts to perform spectral analysis. We defined start and stop times for spectral extraction based on the T_{BB} durations. Six bursts were affected by telemetry saturation which caused gaps in their lightcurves. For their spectral analysis, we excluded gap periods, and we treat the obtained flux as a lower-limit.

We used OSA to extract spectra of the bursts in 12 logarithmic bins between 30 and 300 keV. We performed spectral analysis with Xspec version 12.12 (Arnaud 1996). We used two models: an optically thin thermal bremsstrahlung (OTTB) and an exponentially cut-off power law (COMPT). The single component OTTB model provided a good fit for 38 bursts, yielding an error-weighted average temperature of $kT = 23.4 \pm 0.3 \text{ keV}$, while the COMPT model had a good fit in case of 16 bursts, with the average parameters $\alpha = -0.03 \pm 0.21$ and $E_{\text{peak}} = 35.1 \pm 1.3 \text{ keV}$. In Figure 4 we show the distribution of the OTTB model temperatures in the left panel and the temperature values as a function of time in the right panel.

The brightest burst was detected at 15:20:30.95 UT of 2022-10-12. It had an average flux of at least $(1.46 \pm 0.05) \times 10^{-6} \text{ erg cm}^{-2} \text{ s}^{-1}$, and a fluence of $(1.60 \pm 0.05) \times 10^{-6} \text{ erg cm}^{-2}$ (these are lower limits because this burst was affected by telemetry saturation). The burst spectral shape was not significantly different from that of the other bursts, as the OTTB model gave a temperature of $kT = 21.2 \pm 0.8 \text{ keV}$, and the COMPT model gave $\alpha = 0.2 \pm 0.6$ and $E_{\text{peak}} = 27.9^{+2.6}_{-4.2} \text{ keV}$.

We calculated the fluences (30–300 keV) of the bursts based on the detected counts and converted them to physical units using the average parameters found with the OTTB fits. This resulted in an energy to count conversion factor ECF of $1.4 \times 10^{-10} \text{ erg cm}^{-2}$. The integral distribution of the burst fluences

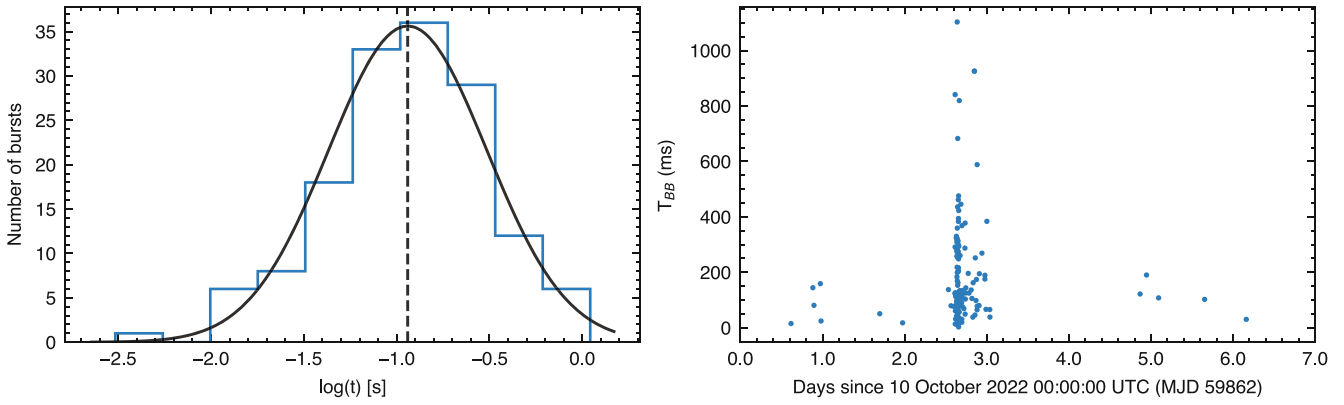


FIGURE 3 | T_{BB} distribution of the October 2022 bursts of SGR J1935 + 2154 (left panel) and distribution of T_{BB} over MJD time (right panel).

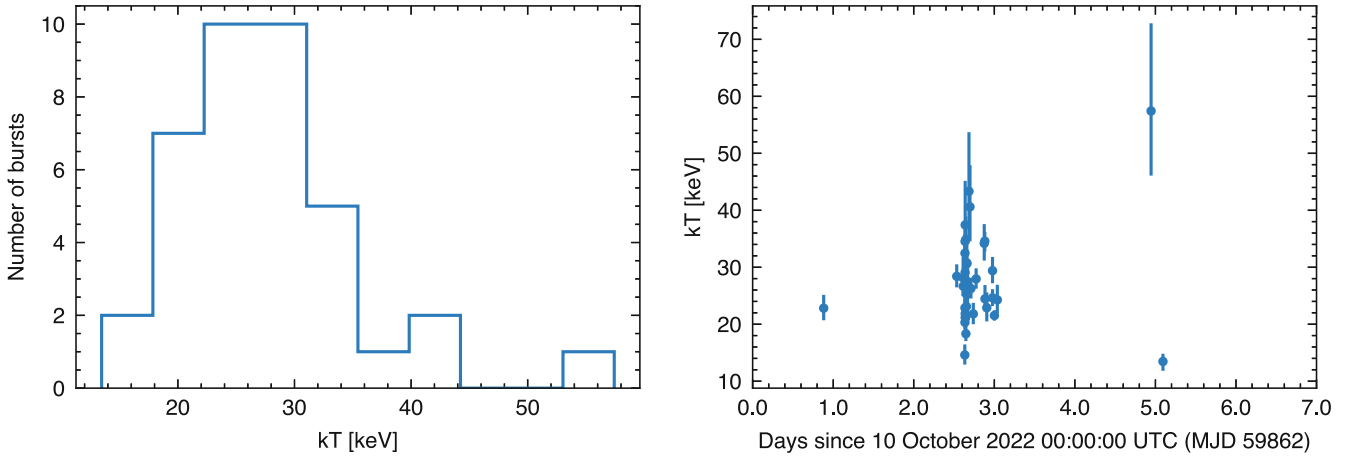


FIGURE 4 | Distribution of the temperatures derived for the bursts with the OTTB model (left panel) and temperatures as a function of time (right panel).

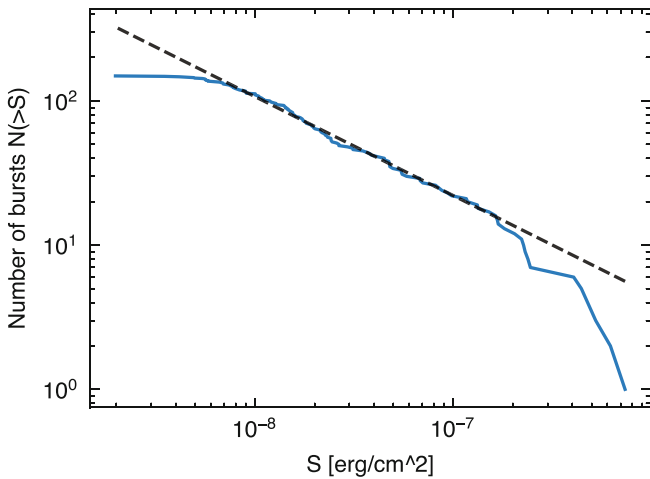


FIGURE 5 | Cumulative number of bursts with the fluence higher than S . Black line shows fit of power law with the slope of 0.69 above $6.71 \times 10^{-9} \text{ erg cm}^{-2}$.

is shown in Figure 5. It is well fitted with a power law with index -0.69 ± 0.01 for 30–300 keV fluences greater than $6.71 \times 10^{-9} \text{ erg cm}^{-2}$.

3 | Conclusions

We have reported some results of our ongoing systematic reanalysis of all the magnetars observed with INTEGRAL. The long term light curves of the hard X-ray flux spanning more than 20 years show that the most variable source is SGR 1806–20, which emitted a giant flare in December 2004 (Mereghetti et al. 2005). Its hard X-ray emission peaked in October 2004, before the giant flare, and then it decreased by a factor of 10 in a period of 15 years. The other sources show only small variability, less than a factor of 3.

SGR J1935+2154 had one of the most active episodes on 12th October 2020. In about 12 h, INTEGRAL detected 137 bursts. For comparison, only 45 other bursts were detected by INTEGRAL in the remaining 31 Ms. in which it observed this magnetar.

The burst durations follow a log-normal distribution, as it has been observed in other magnetars (e.g., Collazzi et al. 2015; Gavriil, Kaspi, and Woods 2004; Göğüş et al. 2001). The average duration $114 \pm 9 \text{ ms}$ agrees with that seen in previous bursting periods, which were in the range of 72 – 182 ms (Lin et al. 2020a, 2020b).

The cumulative distribution of the SGR J1935+2154 burst fluences (LogN-LogS) during the October 2022 activity period is well described by a power law with slope of -0.69 ± 0.01 for 30–300 keV fluences above $\sim 6.7 \times 10^{-9}$ erg cm $^{-2}$. For our adopted spectral shape, this limit corresponds to $\sim 2 \times 10^{-8}$ erg cm $^{-2}$ in the 8–200 keV range used by Lin et al. (2020a) and Cai, Xiong, et al. (2022) for Fermi/GBM and HXMT data, respectively. Our LogN-LogS is consistent with that found by these authors.

Acknowledgments

The results reported in this article are based on data obtained with INTEGRAL, an ESA mission with instruments and science data centers funded by ESA member states, and with the participation of the Russian Federation and the USA. This work received financial support from INAF through the Magnetars Large Program Grant (PI S. Mereghetti). Open access publishing facilitated by Istituto nazionale di astrofisica, as part of the Wiley - CRUI-CARE agreement.

Conflicts of Interest

The authors declare no conflicts of interest.

Endnotes

¹ See section Known Limitations in the IBIS Analysis User Manual available at the ISDC website <http://isdc.unige.ch/integral/analysis>.

References

Arnaud, K. A. 1996. “XSPEC: The First Ten Years.” In *Conference proceedings: Proceedings of the Astronomical Data Analysis Software and Systems*, edited by G. H. Jacoby and J. Barnes, vol. 101, 17. San Francisco: Astronomical Society of the Pacific Conference Series.

Bochenek, C. D., V. Ravi, K. V. Belov, et al. 2020. “A Fast Radio Burst Associated With a Galactic Magnetar.” *Nature* 587, no. 7832: 59–62. <https://doi.org/10.1038/s41586-020-2872-x>.

Borghese, A., F. Coti Zelati, G. L. Israel, et al. 2022. “The First Seven Months of the 2020 X-Ray Outburst of the Magnetar SGR J1935+2154.” *Monthly Notices of the Royal Astronomical Society* 516, no. 1: 602–616. <https://doi.org/10.1093/mnras/stac1314>.

Cai, C., S.-L. Xiong, L. Lin, et al. 2022. “An Insight-HXMT Dedicated 33 Day Observation of SGR J1935+2154. II. Burst Spectral Catalog.” *Astrophysical Journal Supplement Series* 260, no. 2: 25. <https://doi.org/10.3847/1538-4365/ac67e4>.

Cai, C., W.-C. Xue, C.-K. Li, et al. 2022. “An Insight-HXMT Dedicated 33 Day Observation of SGR J1935+2154. I. Burst Catalog.” *Astrophysical Journal Supplement Series* 260, no. 2: 24. <https://doi.org/10.3847/1538-4365/ac6172>.

CHIME/FRB Collaboration, Andersen, B. C., K. M. Bandura, et al. 2020. “A Bright Millisecond-Duration Radio Burst From a Galactic Magnetar.” *Nature* 587, no. 7832: 54–58. <https://doi.org/10.1038/s41586-020-2863-y>.

Collazzi, A. C., C. Kouveliotou, A. J. van der Horst, et al. 2015. “The Five Year Fermi/GBM Magnetar Burst Catalog.” *Astrophysical Journal Supplement Series* 218, no. 1: 11. <https://doi.org/10.1088/0067-0049/218/1/11>.

Coti Zelati, F., N. Rea, J. A. Pons, S. Campana, and P. Esposito. 2018. “Systematic Study of Magnetar Outbursts Systematic Study of Magnetar Outbursts.” *Monthly Notices of the Royal Astronomical Society* 474, no. 1: 961–1017. <https://doi.org/10.1093/mnras/stx2679>.

den Hartog, P. R., W. Hermsen, L. Kuiper, J. Vink, J. J. M. in’t Zand, and W. Collmar. 2006. “INTEGRAL Survey of the Cassiopeia Region in Hard

X Rays.” *Astronomy & Astrophysics* 451, no. 2: 587–602. <https://doi.org/10.1051/0004-6361:20054711>.

Ducci, L., S. Mereghetti, D. Götz, and A. Santangelo. 2015. “Ten Years of INTEGRAL Observations of the Hard X-Ray Emission From SGR 1900+14.” *Astronomy & Astrophysics* 583: A113. <https://doi.org/10.1051/0004-6361/201527029>.

Gavriil, F. P., M. E. Gonzalez, E. V. Gotthelf, V. M. Kaspi, M. A. Livingstone, and P. M. Woods. 2008. “Magnetar-Like Emission From the Young Pulsar in Kes 75.” *Science* 319, no. 5871: 1802. <https://doi.org/10.1126/science.1153465>.

Gavriil, F. P., V. M. Kaspi, and P. M. Woods. 2004. “A Comprehensive Study of the X-Ray Bursts From the Magnetar Candidate 1E 2259+586.” *Astrophysical Journal* 607, no. 2: 959–969. <https://doi.org/10.1086/383564>.

Göğüş, E., C. Kouveliotou, P. M. Woods, C. Thompson, R. C. Duncan, and M. S. Briggs. 2001. “Temporal and Spectral Characteristics of Short Bursts From the Soft Gamma Repeaters 1806-20 and 1900+14.” *Astrophysical Journal* 558, no. 1: 228–236. <https://doi.org/10.1086/322463>.

Goldwurm, A., P. David, L. Foschini, et al. 2003. “The INTEGRAL/IBIS Scientific Data Analysis.” *Astronomy & Astrophysics* 411: L223–L229. <https://doi.org/10.1051/0004-6361:20031395>.

Götz, D., S. Mereghetti, S. Molkov, et al. 2006. “Two Years of INTEGRAL Monitoring of the Soft Gamma-Ray Repeater SGR 1806-20: From Quiescence to Frenzy.” *Astronomy & Astrophysics* 445, no. 1: 313–321. <https://doi.org/10.1051/0004-6361:20053648>.

Götz, D., N. Rea, G. L. Israel, et al. 2007. “Long Term Hard X-Ray Variability of the Anomalous X-Ray Pulsar 1RXS J170849.0-400910 Discovered With INTEGRAL.” *Astronomy & Astrophysics* 475, no. 1: 317–321. <https://doi.org/10.1051/0004-6361:20078291>.

Ibrahim, A. Y., A. Borghese, F. Coti Zelati, et al. 2024. “An X-Ray and Radio View of the 2022 Reactivation of the Magnetar SGR J1935+2154.” *Astrophysical Journal* 965, no. 1: 87. <https://doi.org/10.3847/1538-4357/ad293b>.

Kaneko, Y., E. Göğüş, M. G. Baring, et al. 2021. “Fermi/GBM Observations of the SGRJ1935+2154 Burst Forest.” *Astrophysical Journal* 916, no. 1: L7. <https://doi.org/10.3847/2041-8213/ac0fe7>.

Kaspi, V. M., and A. M. Beloborodov. 2017. “Magnetars.” *Annual Review of Astronomy and Astrophysics* 55, no. 1: 261–301. <https://doi.org/10.1146/annurev-astro-081915-023329>.

Kuiper, L., A. K. Harding, T. Enoto, W. C. G. Ho, K. Gendreau, and Z. Arzoumanian. 2020. “A NICER X-Ray View on the Magnetar-Like 2020 Outburst of PSR J1846-0258.” *Astronomer’s Telegram* 13985: 1.

Kuiper, L., and W. Hermsen. 2009. “High-Energy Characteristics of the Schizophrenic Pulsar PSR J1846-0258 in Kes 75. Multi-Year RXTE and INTEGRAL Observations Crossing the Magnetar-Like Outburst.” *Astronomy & Astrophysics* 501, no. 3: 1031–1046. <https://doi.org/10.1051/0004-6361/200811580>.

Kuiper, L., W. Hermsen, P. R. den Hartog, and W. Collmar. 2006. “Discovery of Luminous Pulsed Hard X-Ray Emission From Anomalous X-Ray Pulsars 1RXS J1708-4009, 4U 0142+61, and 1E 2259+586 by INTEGRAL and RXTE.” *Astrophysical Journal* 645, no. 1: 556–575. <https://doi.org/10.1086/504317>.

Lebrun, F., J. P. Leray, P. Lavocat, et al. 2003. “ISGRI: The INTEGRAL Soft Gamma-Ray Imager.” *Astronomy & Astrophysics* 411: L141–L148. <https://doi.org/10.1051/0004-6361:20031367>.

Li, C. K., L. Lin, S. L. Xiong, et al. 2021. “HXMT Identification of a Non-thermal X-Ray Burst From SGR J1935+2154 and With FRB 200428.” *Nature Astronomy* 5: 378–384. <https://doi.org/10.1038/s41550-021-01302-6>.

- Lin, L., E. Göğüş, O. J. Roberts, et al. 2020a. “Burst Properties of the Most Recurring Transient Magnetar SGR J1935+2154.” *Astrophysical Journal* 893, no. 2: 156. <https://doi.org/10.3847/1538-4357/ab818f>.
- Lin, L., E. Göğüş, O. J. Roberts, et al. 2020b. “Fermi/GBM View of the 2019 and 2020 Burst Active Episodes of SGR J1935+2154.” *Astrophysical Journal* 902, no. 2: L43. <https://doi.org/10.3847/2041-8213/abbefe>.
- Mereghetti, S., D. Götz, A. von Kienlin, et al. 2005. “The First Giant Flare From SGR 1806-20: Observations Using the Anticoincidence Shield of the Spectrometer on INTEGRAL.” *Astrophysical Journal* 624, no. 2: L105–L108. <https://doi.org/10.1086/430669>.
- Mereghetti, S., J. A. Pons, and A. Melatos. 2015. “Magnetars: Properties, Origin and Evolution.” *Space Science Reviews* 191, no. 1–4: 315–338. <https://doi.org/10.1007/s11214-015-0146-y>.
- Mereghetti, S., V. Savchenko, C. Ferrigno, et al. 2020. “INTEGRAL Discovery of a Burst With Associated Radio Emission From the Magnetar SGR 1935+2154.” *Astrophysical Journal* 898, no. 2: L29. <https://doi.org/10.3847/2041-8213/aba2cf>.
- Molkov, S., K. Hurley, R. Sunyaev, P. Shtykovsky, M. Revnivtsev, and C. Kouveliotou. 2005. “The Broad-Band Spectrum of the Persistent Emission From SGR 1806-20.” *Astronomy & Astrophysics* 433, no. 2: L13–L16. <https://doi.org/10.1051/0004-6361:200500087>.
- Olausen, S. A., and V. M. Kaspi. 2014. “The McGill Magnetar Catalog.” *Astrophysical Journal Supplement Series* 212, no. 1: 6. <https://doi.org/10.1088/0067-0049/212/1/6>.
- Ridnaia, A., D. Svinin, D. Frederiks, et al. 2021. “A Peculiar Hard X-Ray Counterpart of a Galactic Fast Radio Burst.” *Nature Astronomy* 5: 372–377. <https://doi.org/10.1038/s41550-020-01265-0>.
- Scargle, J. D. 1998. “Studies in Astronomical Time Series Analysis. V. Bayesian Blocks, a New Method to Analyze Structure in Photon Counting Data.” *Astrophysical Journal* 504, no. 1: 405–418. <https://doi.org/10.1086/306064>.
- Tavani, M., C. Casentini, A. Ursi, et al. 2021. “An X-Ray Burst From a Magnetar Enlightening the Mechanism of Fast Radio Bursts.” *Nature Astronomy* 5: 401–407. <https://doi.org/10.1038/s41550-020-01276-x>.
- Ubertini, P., F. Lebrun, G. Di Cocco, et al. 2003. “IBIS: The Imager On-Board INTEGRAL.” *Astronomy & Astrophysics* 411: L131–L139. <https://doi.org/10.1051/0004-6361:20031224>.
- Younes, G., T. Güver, C. Kouveliotou, et al. 2020. “NICER View of the 2020 Burst Storm and Persistent Emission of SGR 1935+2154.” *Astrophysical Journal* 904, no. 2: L21. <https://doi.org/10.3847/2041-8213/abc94c>.
- Younes, G., C. Kouveliotou, A. Jaodand, et al. 2017. “X-Ray and Radio Observations of the Magnetar SGR J1935+2154 During Its 2014, 2015, and 2016 Outbursts.” *Astrophysical Journal* 847, no. 2: 85. <https://doi.org/10.3847/1538-4357/aa899a>.